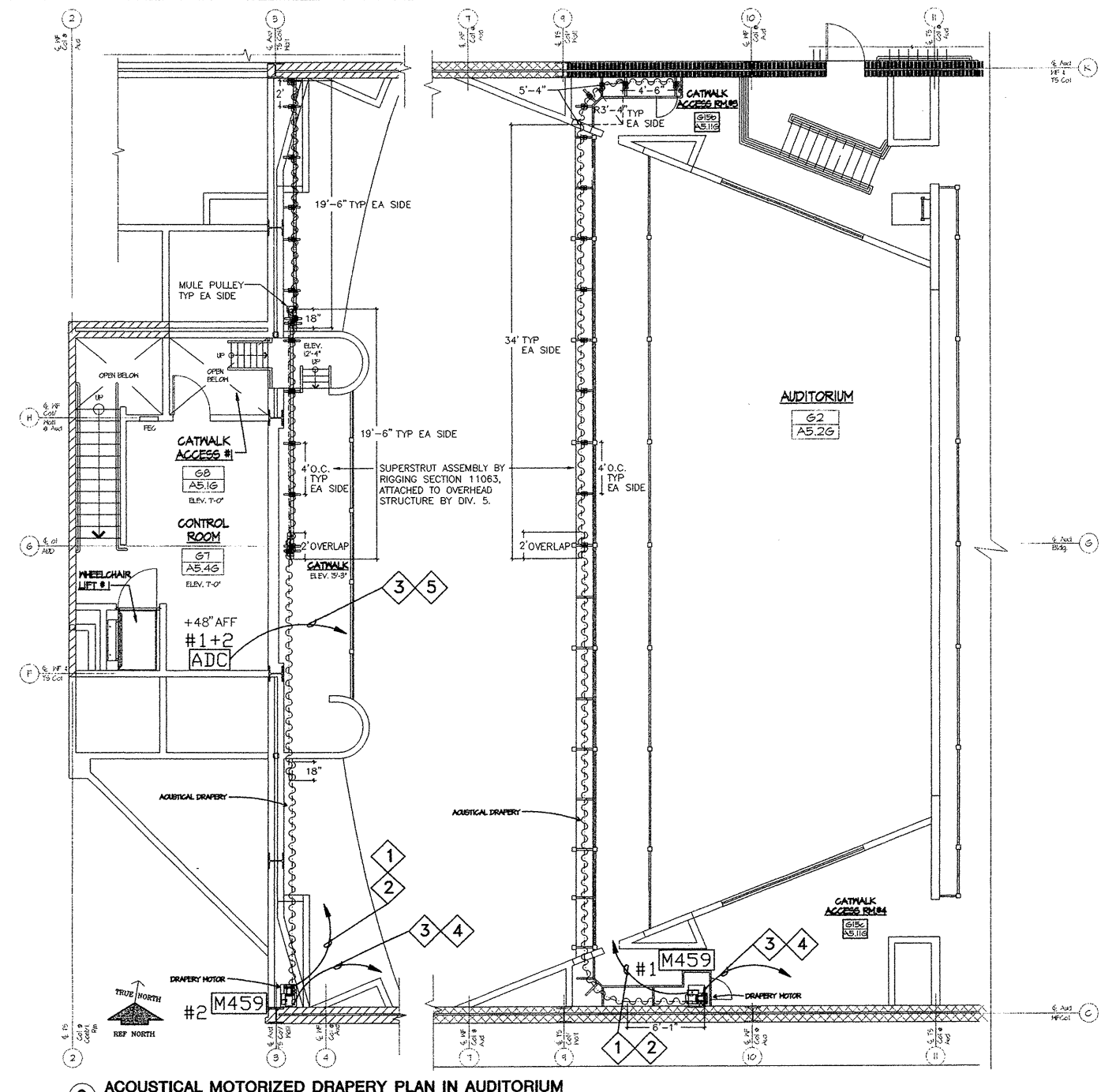


CONSTRUCTION SET WITH POSTED ADDENDA



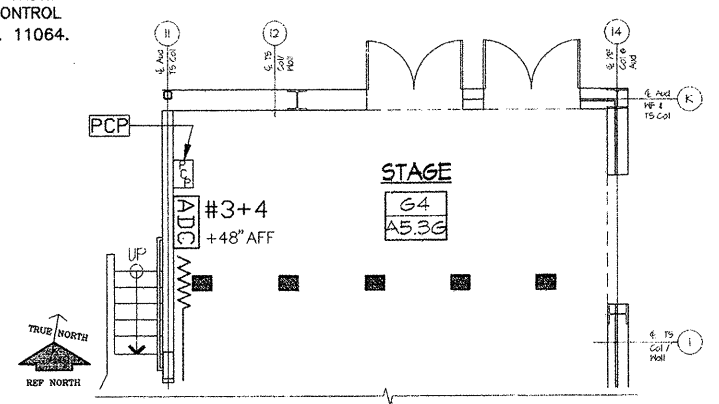
2 ACUSTICAL MOTORIZED DRAPERIES PLAN IN AUDITORIUM
3/16" = 1'-0"

KEY: ACOUSTIC DRAPE MOTOR *

- M459** AUDITORIUM ACOUSTIC DRAPE MOTOR SUPPLIED/MOUNTED UNDER SEC. 11064. EC SUPPLIES/INSTALLS ALL #12AWG THHN CONDUCTORS FOR BOTH POWER AND CONTROL PER H&H MANUFACTURER WIRING DIAGRAM. ALL WIRING FOR EACH MOTOR IS DEDICATED; NO DAISY CHAINS.
 - ADC** AUDITORIUM ACOUSTIC DRAPE PUSHBUTTON FACE PLATE SUPPLIED UNDER SEC. 11064. EC SUPPLIES/MOUNTS 1-GANG BOX & PULLS CONTROL WIRES FOR EACH STATION. CONTROL TERMINATION UNDER SEC. 11064. TYP 4 (2 ● CONTROL RM; 2 ● STAGE).
- * LABEL EVERY WIRE AT POINT OF ORIGIN & TERMINATION.

KEY: ACOUSTIC MOTOR TAGS

- 1 3/4" COND. & 3 #12AWG THHN CONDUCTORS (BLACK/WHITE/GREEN) FOR ACOUSTIC DRAPE POWER.
- 2 1-PHASE 2-WIRE+GRND 120V 60HZ HOME RUN TO PANEL & BREAKER SHOWN ON ELEC. DWGS.
- 3 3/4" COND. & 6 #12AWG THHN CONDUCTORS FOR ACOUSTIC DRAPE CONTROL.
- 4 TO ADC #1 & 2 - ACOUSTIC DRAPE CONTROL STATION @ CONTROL ROOM.
- 5 TO ADC #3 & 4 - ACOUSTIC DRAPE CONTROL STATION @ STAGE RIGHT CONTROL AREA.

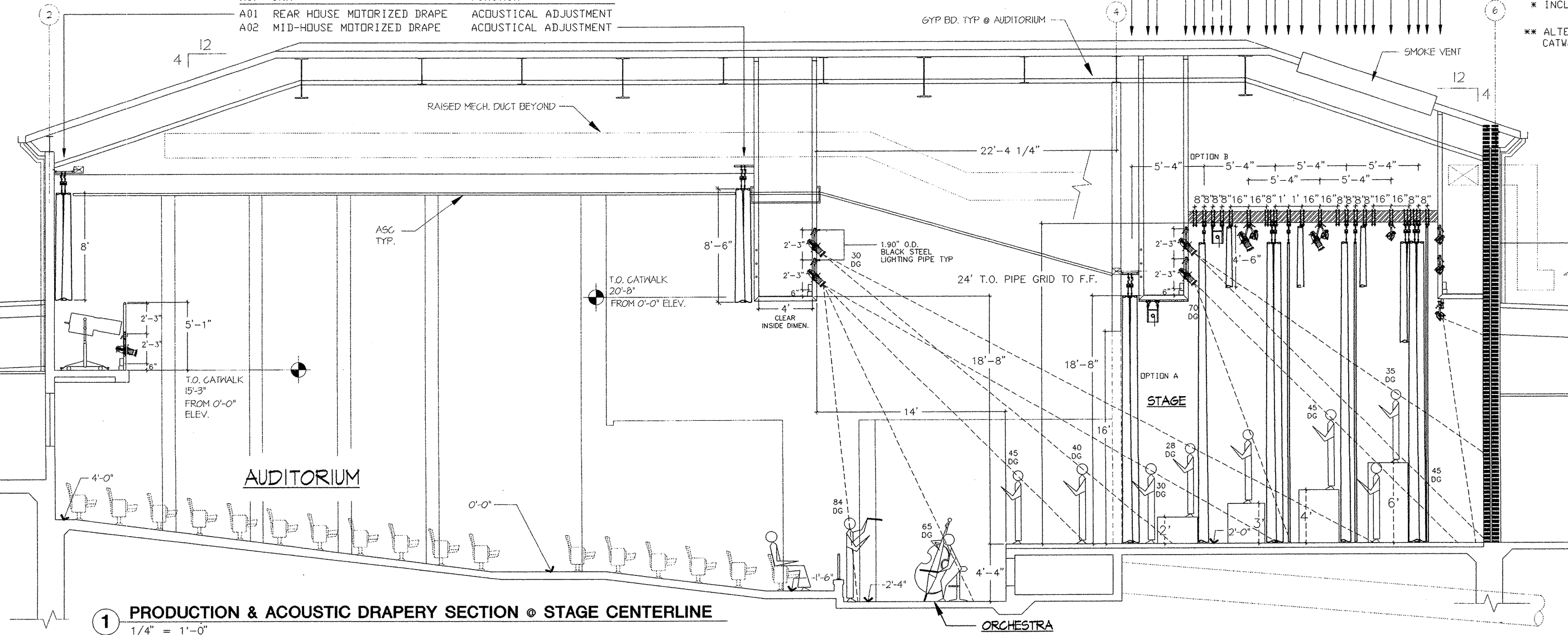


3 ACOUSTICAL MOTORIZED DRAPERIES PLAN @ STAGE
3/16" = 1'-0"

NO.	UNIT	FUNCTION
01	UNISTRUT/BI-PART TRACK	MAIN TRAVELER
C	PROSCENIUM CATWALK: ELEC.#3	FRONT LIGHT
02	GRID PIPE	OPEN
03	GRID PIPE/BI-PART TRACK	BLACK VELOUR TRAVELING LEG
04**	GRID PIPE	AV: PROJECTION SCREEN, ET AL
05**	GRID PIPE	AV: PROJECTION SCREEN, ET AL
06	GRID PIPE	BLACK VELOUR BORDER
07	GRID PIPE: ELEC.#4	FRONT, BACK & DOWN LIGHT
08	GRID PIPE	OPEN
09	GRID PIPE/BI-PART TRACK	BLACK VELOUR MIDSTAGE TRAVELER
10	GRID PIPE/1-WAY TRACK	BLACK SHARKTOOTH SCRIM
11	GRID PIPE	BLACK VELOUR BORDER
12	GRID PIPE: ELEC.#5	FRONT, BACK & DOWN LIGHT
13	GRID PIPE	OPEN
14	GRID PIPE/BI-PART TRACK	BLACK VELOUR TRAVELING LEG
15	GRID PIPE/1-WAY TRACK	SKY BLUE SHARKTOOTH SCRIM
16	GRID PIPE	BLACK VELOUR BORDER
17	GRID PIPE	OPEN
18	GRID PIPE: ELEC.#6	BACK & DOWN LIGHT
19	GRID PIPE/BI-PART TRACK	BLACK VELOUR TRAVELING BORDER
20	GRID PIPE/BI-PART TRACK	BLACK VELOUR UPSTAGE TRAVELER
21	GRID PIPE	OPEN FOR BACKDROP
22	D UPSTAGE CATWALK: ELEC.#7 *	CYCLORAMA & BACK LIGHT

* INCLUDES CYC PIPE ATTACHED TO SIDE OF US CATWALK
** ALTERNATE PROJ. SCREEN LOCATIONS UNDER PROSCENIUM CATWALK PREFERRED. INSTALL PIPES AT BOTH LOCATIONS.

NO.	UNIT	FUNCTION
A01	REAR HOUSE MOTORIZED DRAPE	ACOUSTICAL ADJUSTMENT
A02	MID-HOUSE MOTORIZED DRAPE	ACOUSTICAL ADJUSTMENT



1 PRODUCTION & ACOUSTIC DRAPERIES SECTION @ STAGE CENTERLINE
1/4" = 1'-0"

ACOUSTICAL DRAPERIES NOTES

- SUPERSTRUT ASSEMBLY**
- ASSEMBLY IS SIMILAR TO MAIN DRAPE ATTACHMENT TO OVERHEAD STRUCTURE. SEE DTL 8/T3.2.
 - TYPICAL ATTACHMENT IS 4'-0" O.C. CURVES, OVERLAPS & TRACK ENDS USUALLY REQUIRE ADDITIONAL ATTACHMENT POINTS.
 - ASSEMBLY INCLUDES:
 - a. 3/8" DIA. BLACK THREADED ROD
LOAD LIMIT: 610 LB.
 - b. H&H 448B BLACK ROD SUSPENSION BRACKET
LOAD LIMIT: 150 LB.
 - c. SUPERSTRUT A-1200HS
1-5/8" SQ. HALF-SLOT CHANNEL
LOAD LIMIT: 2,237.25 LB.
 - d. TWO 1/2" DIA. MACHINE BOLTS w. NYLOCK NUTS & LOCK WASHERS.

NO.	REVISION	BY	DATE
1	DD SUBMITTAL	HA	10/25/04
2	60% DISTRICT REVIEW	HA	02/28/05
3	DSA SUBMITTAL	HA	06/16/05
4	DSA 100%	HA	01/09/06

THEATER SYSTEMS DESIGN
Sunsaura INC
724 EUCLID AVENUE, BERKELEY, CA 94708
PH: 510/527-6349 FX: 510/528-7970
e-mail: seday@attglobal.net

All reports, drawings, specifications, computer files, field data, notes and other documents and instruments prepared by AKOL & YOSHII, Inc. as instruments shall remain the property of AKOL & YOSHII, Inc.; AKOL & YOSHII, Inc. shall retain all common law, statutory and other reserved rights, including the copyright thereto.

AKOL & YOSHII
ARCHITECTS AND ENGINEERS
1407 OAKLAND BLVD., SUITE 203
WALNUT CREEK, CALIFORNIA 94596
PHONE: (925) 934-9522
FAX: (925) 934-6427
E-MAIL ADDRESS: halim@akol-yoshii.com

IDENTIFICATION STAMP
DIVISION OF THE STATE ARCHITECT
APPL # 7-18/01-108820
No. C-12257
Ren. 1/31/07
DATE: JAN 23 2009

Project: SAN RAMON VALLEY UNIFIED SCHOOL DISTRICT
DOUGHERTY VALLEY HIGH SCHOOL
INCREMENT 2
10550 ALBION ROAD SAN RAMON, CA 94582

Sheet Title: **AUDITORIUM PRODUCTION & ACOUSTICAL DRAPERIES**
DRAWN BY: SD
CHECKED BY: SD
JOB NUMBER: 04-1
DATE: JUNE 16, 2005
SCALE: AS NOTED
PLOT SCALE: FULL

FILE: SHEET NO: **T31**